

September 2022

# navigate

Westport Program Update

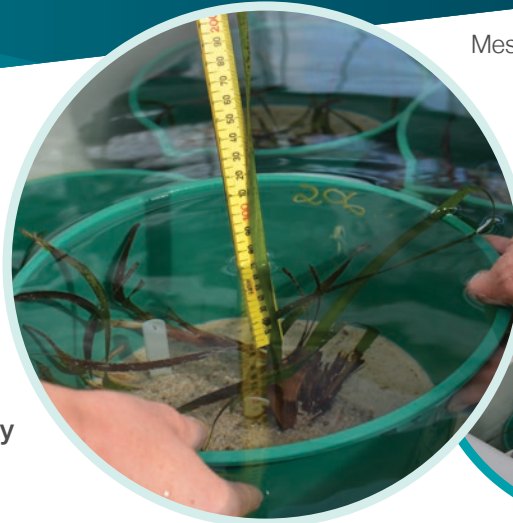


## Taking a closer look at Seagrass

**Did you know that benthic habitats refer to the seafloor and is one of the key areas of study in the WAMSI Westport Science Program?**

The Benthic Habitat and Communities theme is investigating how seagrass is affected by different pressures, such as how it reacts to higher temperatures caused by climate change, dredging related activities and changes to light availability at the seabed.

Edith Cowan University's 'Mesocosm' laboratory will help researchers understand the effect of different pressures on seagrass health. Their specialist centre uses sand that is sourced from the banks of Owen Anchorage (north of Cockburn Sound), to recreate suitable seabed conditions.



Mesocosm facility at Edith Cowan University.  
Images: WAMSI



Seagrass is important because it historically forms the basis of the region's food web, is a critical habitat for many iconic species and acts as an indicator for the health of the whole ecosystem. By finding out what makes it tick, we can plan how to best mitigate impacts, future-proof existing meadows and restore seagrass where it was lost.

To learn more about the WAMSI Westport Marine Science Program visit [www.westport.wa.gov.au](http://www.westport.wa.gov.au)

## Spotlight on Anketell Road: Kwinana Freeway



**The early concept design for the Anketell-Thomas Road Freight Corridor proposes a new dedicated freight bridge, in an innovative design unlike anything previously seen in Perth.**

Extending between Lyon Road and Mandogalup Road, the pioneering design creates a free-flow system, that allows freight vehicles to travel on a different level to regular traffic whilst reducing the environmental footprint.

According to Main Roads' Network Planning and Development Manager, Paul Fourie, an exclusive freight vehicle level will reduce disruptions to commuter traffic, whilst providing for the efficient movement of freight.

"The Anketell-Thomas Road freight corridor concept has been designed with safety and efficiency front of mind."

The road will utilise a two-bridge system to achieve a dedicated freight path. The freight vehicle level is planned to be 10 metres above the existing road bridge over Kwinana Freeway.

The first cut of the concept for the Anketell-Thomas road design is subject to further planning over the next 18 months including ongoing community and stakeholder consultation and engagement.

The current concept map can now be viewed on Westport's website:  
[www.westport.wa.gov.au/planning/anketell-thomas-road-freight-corridor/](http://www.westport.wa.gov.au/planning/anketell-thomas-road-freight-corridor/)





# Planning for the future



**Now is the time for us to ask the big questions about how freight will move to and from the new terminal, over the next 100 years. Will it be mainly by road or rail? How can we make it sustainable? What emerging technologies could completely change freight transportation?**

Taking a long-term, strategic approach to planning Westport is investigating what technologies are likely to become available this century, and how community expectations will shift over this time.

We are often asked if we are considering electric vehicles, higher freight volumes on rail, and global changes to shipping trends. The answer is yes. Designing an efficient, world-leading, and sustainable terminal and supply chain is key to the success of the Westport Program.

It is an exciting time to be planning long-term infrastructure, with significant developments in the transport and energy sectors. Technologies such as electric vehicles, hydrogen power, automated rail, could be the norm in the next 50 years. That's why we are planning for innovation, building flexibility into our design, and empowering our team and stakeholders to explore innovative solutions.

Westport's Managing Director Patrick Seares described the program as a "Greenfield opportunity" and says now is the time to challenge the way that "things are done."

**"We want industry, academics, researchers, the community and government to come to us with their ideas. Nothing is off the table; we want to consider as many options as possible to achieve the best possible outcomes for our state," Patrick said.**

"Already, through projects such as Westport's Landside Logistics Opportunities Study, we have sought input from the users of today's supply chain on what the current system lacks, where it is inefficient and how it could be improved."

Going forward, Westport will be refining design options through the Supply Chain Integrated Design Project and will be testing options that incorporate electric vehicles, increased rail freight volumes and other innovative solutions.



If you have an idea you want to share with the project team, email [enquiries@westport.wa.gov.au](mailto:enquiries@westport.wa.gov.au) with the subject 'Planning for the future'.

## The Bigger Picture

**Whilst Westport is a major driver for planning timeframes and priorities within the Western Trade Coast, it is just one piece of the Western Australian Government's vision for the broader Cockburn Sound area.**

Westport is working closely with various project partners including the Department of Jobs, Tourism, Science,

and Innovation, which is the agency delivering the WA Government's commitment to transform the Western Trade Coast into a Global Advanced Industries Hub.

This is an opportunity to preserve, enhance and promote the economic contributions of the Western Trade Coast, and provide a clear mechanism to coordinate the variety of government priorities in the area,

with the aim of alleviating challenges to industry.

The Department of Jobs, Tourism, Science, and Innovation will be engaging with industry to develop an economic framework for the Global Advanced Industries Hub, which will focus on industry development and attraction, land, and infrastructure as well as workforce development and skills.



Westport's Noongar Advisory Group meeting with staff in Kwinana

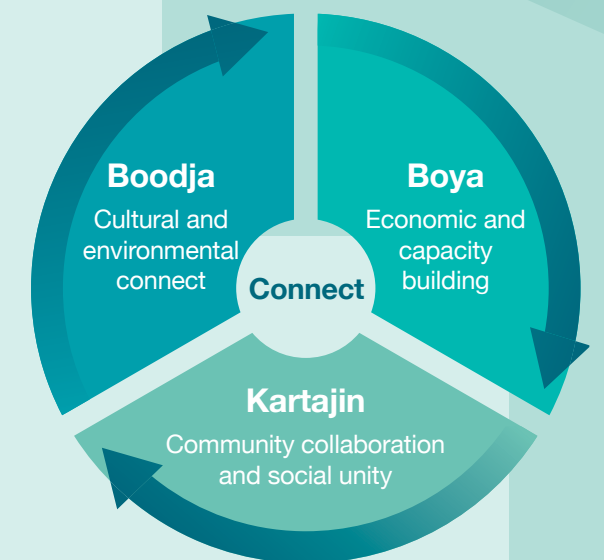
## Exploring new opportunities

**Westport is working with Whadjuk and Gnaala Karla Booja people to explore how the new terminal and supporting infrastructure can benefit their community.**

Led by Westport's Noongar Advisory Group, Westport is developing a Noongar Opportunities Strategy to ensure Noongar culture, heritage and connections to country are integrated in planning for the future terminal.

Going forward, Westport will also be collaborating with our Noongar Advisory and Aboriginal Economic Opportunities Groups to identify potential future initiatives to increase employment, procurement, and training opportunities beyond the Stage 3 Planning Program.

Westport's Noongar Opportunities Strategy will be informed by three strategic pillars: Boodja, Kartajin and Boya.



### Boodja

Boodja means country, and in Westport's Noongar Opportunities Strategy refers to cultural and environmental connections. This includes connecting songlines, cultural mapping and the communication of cultural knowledge. Projects within this strategic pillar will also seek to integrate Noongar cultural knowledge with Westport's environmental research program.



### Kartajin

Kartajin is the Noongar word for knowledge, and this strategic pillar aims to create opportunities to embed cultural knowledge within Westport. Kartajin projects will seek to collaborate with the community to capture cultural knowledge, including cultural training for Westport staff and contractors, and the integration of culture and heritage into design and environmental management.



### Boya

The Boya (or money) pillar will focus on economic and capacity building within the community. One aspect of this will be engaging Aboriginal businesses as the project progresses. The other aspect focuses on building capability, so the future workforce is ready to step into the new opportunities created by Westport.

## How we are engaging with the community and stakeholders?

**Over the last few months, the Westport team has been busy getting out in the community and talking to our stakeholders.**

We've held pop-up events at local Farmer's Markets and a community NAIDOC week event, hosted online briefings, attended Fremantle Ports Outer Harbour Community Liaison Group, and presented at local council meetings.

Recognising the different interests of different stakeholder groups, we have also been hosting a series of bespoke webinars.

These have included a 'Users of Cockburn Sound' webinar, exploring how the proposed terminal will impact recreational and commercial users.



To be notified of upcoming Westport events, webinars, and pop-ups subscribe for program updates via [www.westport.wa.gov.au/contact/subscribe/](http://www.westport.wa.gov.au/contact/subscribe/)

## Getting to the bottom of Cockburn Sound

**Westport's geotechnical and geophysical studies are helping to shine a light on Cockburn Sound's seabed.**

As part of this work a geophysical survey vessel will emit and receive low levels of sound, harmless to marine life, to collect data on the physical properties of the seabed. The seabed studies also include specialist drilling to collect geological cores to 'ground truth' the geophysical data. This means the data collected through the remote surveys using sound is verified by comparing it to a physical source.

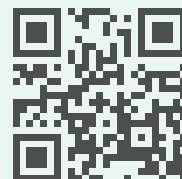
The data collected from these investigations will allow us to create a 3D geological model of the layers of earth under the seabed. Westport's Environment Technical Lead said, "knowing more about the composition of sediments and underlying rock layers means Westport can better plan engineering and dredging requirements for the new terminal."



*"This work will support Westport develop innovative port designs and help improve environmental outcomes."*

## Stay in the loop with Westport

Visit our website to subscribe for Westport updates and read all latest project news  
[www.westport.wa.gov.au](http://www.westport.wa.gov.au)



Westport Office

140 William Street, Perth WA 6000

(08) 6551 6525

✉ [enquiries@westport.wa.gov.au](mailto:enquiries@westport.wa.gov.au)

🌐 [www.westport.wa.gov.au](http://www.westport.wa.gov.au)

🌐 [www.linkedin.com/company/westport-program](https://www.linkedin.com/company/westport-program)