

How is Westport engaging with Traditional Owners?

Westport is working with Whadjuk and Gnaala Karla Booja peoples to explore how the new terminal and supporting infrastructure can benefit their community.

We have established two groups to work with us to recognise the Noongar culture throughout the program and identify opportunities for Noongar peoples and businesses.

Noongar Advisory Group

Westport's Noongar Advisory Group will provide cultural, spiritual, community, wellbeing, economic, social and environmental advice to the Westport Program and promote culture and Country. The Advisory Group will also provide a conduit back to the wider Noongar community.

Following a briefing from Westport, 10 Members and 4 stakeholders were selected through a peer nomination process. Members and stakeholders include local Noongar community leaders and Elders, and representatives from the South West Aboriginal Land and Sea Council

To mark the start of our relationship with the Noongar Advisory Group, Westport took the group to the site of the proposed new terminal to hold a Smoking Ceremony led by Westport's Aboriginal Engagement Officer and Noongar man Steven Jacobs.

"Smoking ceremonies are used as a gesture of goodwill and to bring people together," Steven said. "Going further into this project it is very important to have cultural contact and connect." Meeting quarterly, the Advisory group will ensure that traditional owners and the local Noongar community are involved in the Westport program from the planning stage.



Photo from Noongar Advisory Group Tour

Aboriginal Economic Opportunities Group

Members of the Aboriginal Community, including Aboriginal business owners and the Noongar Chamber of Commerce were invited to an introductory meeting, where they elected the members to the Aboriginal Economic Opportunities Group.

The Aboriginal Economic Opportunities Group will use their commercial expertise and cultural knowledge to develop potential business, employment, procurement and training opportunities for the Noongar community.

Westport's Aboriginal Economic Opportunities Group will then provide recommendations to the Noongar Advisory Group for endorsement. As the governing body for Westport's Aboriginal Opportunities program, the Noongar Advisory Group will then discuss and refine these recommendations before providing strategic advice to Westport.



Photo from Noongar Advisory Group Tour

Westport is the State Government's long-term program to investigate, plan and build a future container terminal in Kwinana with integrated road and rail transport networks.

Anketell-Thomas Road Freight Corridor Planning

Westport and Main Roads WA have started early planning for the Anketell-Thomas Road freight corridor. This corridor will connect the future terminal in Kwinana's Outer Harbour with Tonkin Highway and support development opportunities in the area, economic growth and job creation.

The early road concept for the freight corridor between Clementi Road in Mandogalup and Tonkin Highway in Oakford allows for uninterrupted east-west movement for freight vehicles and enhanced safety for local road users. Key design features include:

- Both four and six lanes with a concrete median, and proposed

bridges, interchanges and roundabout access at key intersections.

- Service roads to provide access to properties on Anketell and Thomas roads.
- A shared path along the south side of the corridor for pedestrians and cyclists.

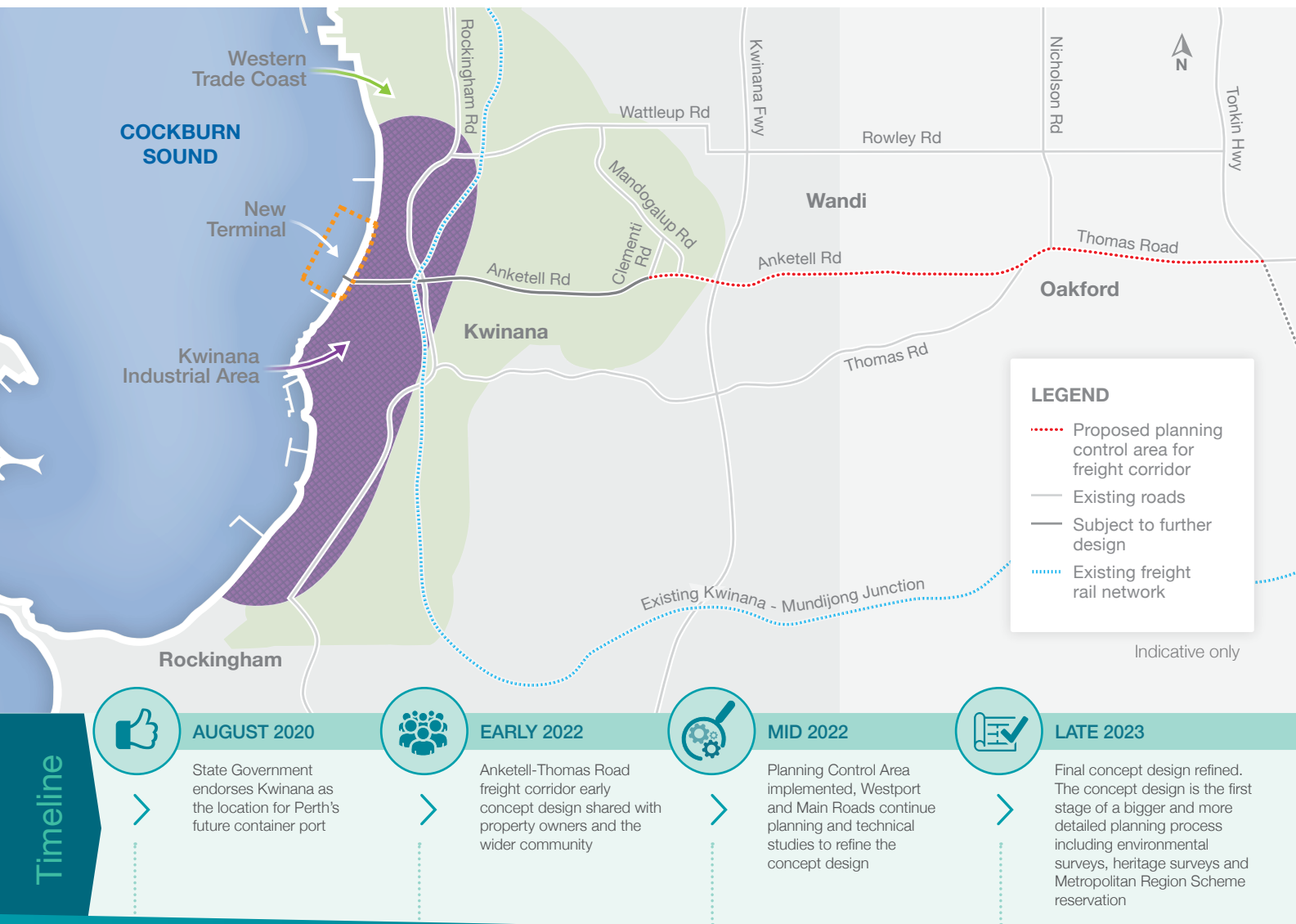
Westport is sharing the early road concept design to capture feedback and will be directly talking to affected property owners along the road corridor.

The early concept design is the first step in the freight corridor planning process. Over the next 18 months we will focus on refining the design, following community engagement and technical studies.

While land requirements and the design are not yet confirmed a Planning Control Area (PCA) is intended to identify the area potentially needed for the future road and ensure proposed developments in the area support the future road freight corridor.

All landowners directly affected by possible land requirements and/or the proposed PCA will be contacted by the Westport Office to discuss what it may mean for them.

To find out more about the Anketell-Thomas Road corridor planning visit: www.westport.wa.gov.au/planning/anketell-thomas-road-freight-corridor/



Keeping freight moving



What are the bottlenecks in WA's container freight chain, and how can Westport smooth them out? These are some of the questions we will be asking when we consult with stakeholders across the freight and supply chain.

Work is underway on Westport's Landside Logistics Opportunities Study, which will shortlist conceptual designs for the supply chain system needed to support the future terminal.

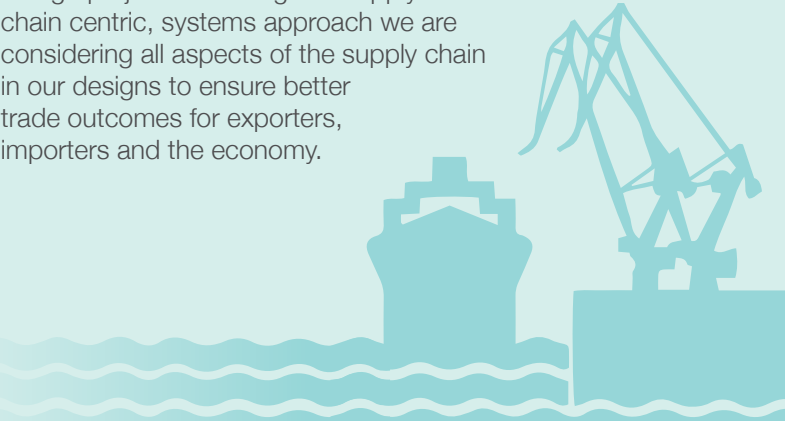
Westport is consulting with stakeholders across the freight and supply chain to identify innovative solutions, new technologies and opportunities to move freight more efficiently, reliably and safely.

By speaking with the people who will use Westport's terminal and integrated road and rail network, we will learn about the problems in the existing supply chain and discuss how they could be addressed.

Globally, landside logistics are evolving to deliver greater value for logistics operators, importers

and exporters, as well as for consumers. An efficient supply-chain helps products to reach their destination faster and at a lower cost.

Once landside logistic options have been identified and shortlisted, they will be rigorously evaluated through Westport's Supply Chain and Integrated Design project. Following this supply chain centric, systems approach we are considering all aspects of the supply chain in our designs to ensure better trade outcomes for exporters, importers and the economy.





Thousands of baby snapper released

As part of the Snapper Guardians program, funded by Westport and Recfishwest, 45,000 snapper fingerlings were released into the waters of Cockburn Sound in February.

The Department of Primary Industries and Regional Development collected the pink snapper eggs last year, hatching and raising them in tanks until they were ready for release. Hatching and rearing them this way increases the likelihood of the fingerlings reaching adulthood.

Snapper are a significant species for recreational fishers and the health of snapper populations are an important indicator for the overall health of Cockburn Sound.

As part of our partnership with the Western Australian Marine Science Institution, Westport's Marine Science program will focus on building a greater understanding of Cockburn Sound's ecosystem and its iconic species.

This work will help us to identify how the port could impact native species and their habitats, and plan how impacts can be mitigated or avoided.



Minister Saffioti, Minister Punch and David Scaife MLA at snapper release

Stay in the loop with Westport

Visit our new website to subscribe for Westport updates and read all latest project news
www.westport.wa.gov.au



Westport Office

140 William Street, Perth WA 6000

(08) 6551 6525

✉ enquiries@westport.wa.gov.au

🌐 www.westport.wa.gov.au

🌐 www.linkedin.com/company/westport-program