

*Indicative only: Subject to Government investment*

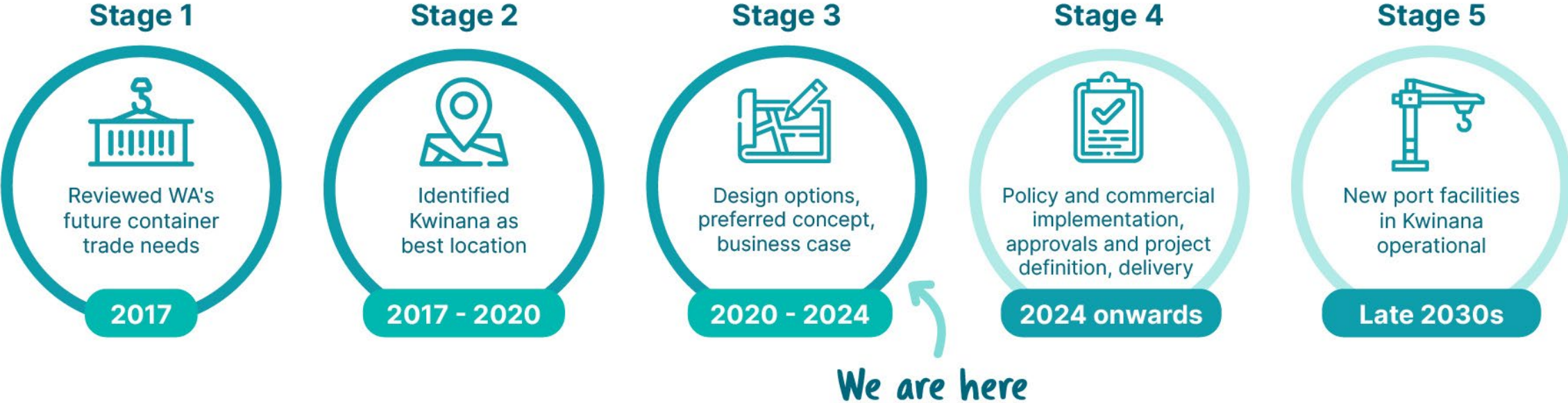


# Industry Briefing:

Consulting, Engineering  
and Construction

14 May 2024

# Stages of Westport



# Stage 4 – definition AND delivery

Stage	Stage 1 & 2	Stage 3	Stage 4	Stage 5
	Strategic optioning	Business Case	Program definition and delivery	Supply chain transition and transition BAU
Westport activities	Analysis of the preferred location for a port.	Preliminary design, economic modelling, commercial framework development, delivery planning and business case development and assessment.  Environmental science and Environmental Impact Assessment (EIA) preparation.	<u>Definition</u> , approvals, and preparation for procurement for all infrastructure packages for PDP decision by Government.  <u>Procurement and delivery</u> of public infrastructure after Final Investment Decision for each project  <u>Procurement of stevedores/operators</u> for delivery of private infrastructure and logistics operations and Commonwealth operations  All <u>land assembly and development</u> for material supply, port development and logistics operations  Delivery of the <u>policy, digital and innovation transformations</u> to optimise future supply chain operations  Preparation of comprehensive <u>transition plan</u> for the container supply chain  Delivery of <u>social and environmental (non-offset) programs</u>	Ships begin unloading at <u>Kwinana</u> .  <u>Transition</u> of stevedores, logistics and port operation.  Handover <u>assets</u> and powers to BAU custodians.  <u>Decommissioning of</u> container trade facilities at Fremantle Inner Harbour.  <u>Program closure</u> and post completion review.



Westport Goals

What do we want the new terminal to achieve?

Criteria

What will this look like?

	<p>1. <b>Better trade outcomes for exporters, importers, and the economy</b></p>	<p>1. Efficient – operating costs for movement of containers across the network</p> <p>2. Reliable – predictability and visibility of shipment movements</p> <p>3. Resilient – capacity to better withstand and recover efficiently from disruptions</p> <p>4. Scalable – capacity to expand or adapt to meet forecast trade and population growth</p> <p>5. Flexible – ability to adapt to future market trends and operator innovation</p>
	<p>2. <b>Local economic growth and jobs are created</b></p>	<p>1. Western Trade Coast’s growth is enabled</p> <p>2. New technological innovation is introduced, and Western Australian technological innovation is leveraged</p> <p>3. High quality jobs and training are created</p>
	<p>3. <b>Acceptable impact on the State’s finances</b></p>	<p>1. Value for money</p> <p>2. Attractive to private investment through commercial and Environmental, Social, and Governance (ESG) opportunities</p> <p>3. Minimised impact on utilities and business</p>
	<p>4. <b>Plan, build and operate the most sustainable port in Australia</b></p>	<p>1. Cockburn Sound is protected</p> <p>2. The container Supply-Chain is carbon neutral</p> <p>3. Infrastructure development and operations are sustainable</p>
	<p>5. <b>Benefits to the community and Aboriginal peoples</b></p>	<p>1. Recreational values protected or enhanced</p> <p>2. Aboriginal and non-Aboriginal heritage is protected and promoted</p> <p>3. Aboriginal economic opportunities are delivered</p>
	<p>6. <b>Safety for workers and the community</b></p>	<p>1. Safe interaction between freight network and the community</p> <p>2. Safe port operations</p>



Indicative only: Subject to Government investment

# Proposed infrastructure

Legend

1

New port facilities

2

Upgraded logistics hubs

3

Anketell Road upgrade

4

Land protected for future Anketell-Thomas Road Freight Corridor

5

Kwinana Freeway widening and upgrades

6

Roe Hwy widening and upgrades

7

Rail duplication and level crossing removals

8

Proposed channel

9

Existing channels

10

Fremantle redevelopment area

11

Kwinana Industrial Area

12

Western Trade Coast

▲

N



# Potential Stage 4 Work packages

Non-infrastructure	Landside (public)	Marine (public)	Private infrastructure
<ul style="list-style-type: none"><li>• Strategy and key strategy implementation</li><li>• Transition plan</li><li>• Innovation and digitisation</li><li>• Policy change and coordination</li><li>• Interface/co-development<ul style="list-style-type: none"><li>◦ Defence</li><li>◦ Water Corporation/GTEs</li><li>◦ Bulk Terminal Landside</li><li>◦ WTC master-planning</li></ul></li><li>• Land assembly and asset management</li></ul>	<ul style="list-style-type: none"><li>• Kwinana Highway upgrades</li><li>• Anketell Road West &amp; Port Precinct Road</li><li>• Roe Highway upgrades</li><li>• Kwinana to Cockburn Rail (including Westport Junction)</li><li>• North Lake Road Level Crossing Removal</li></ul>	<ul style="list-style-type: none"><li>• Early civil works and quarry/material supply</li><li>• Preliminary Dredging and Marine Civil Works</li><li>• Capital Dredging and Reclamation Work</li><li>• Kwinana Bulk Terminal redevelopment</li><li>• Port Civil Works and Port Precinct Rail Work</li></ul>	<ul style="list-style-type: none"><li>• Terminal 1</li><li>• Terminal 2</li><li>• On dock rail</li><li>• Hinterland truck and container staging</li></ul>

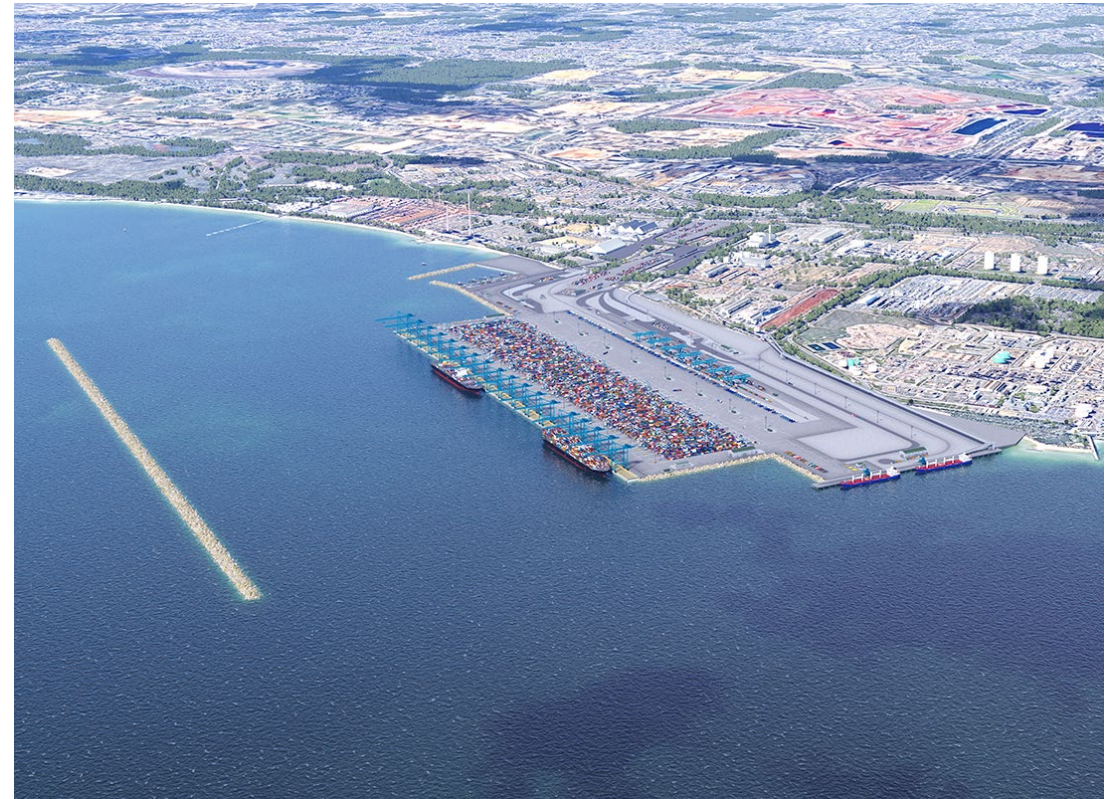




# Marine infrastructure program

## Scope

- 252ha reclaimed port facility and associated landside development (including tug harbours, empty container parks, road and rail connections, Commonwealth activities)
- 22ha breakwater
- A 21km main channel to deep water
- Capital dredging of up to 35 million m<sup>3</sup> of material over an 856ha dredge area
- Replacement Kwinana Bulk Terminal to the south on reclaimed land and associated dredging
- Preparing for private



*\*Figures may change through ongoing design refinement*



# Road infrastructure

## Anketell Road Upgrade:

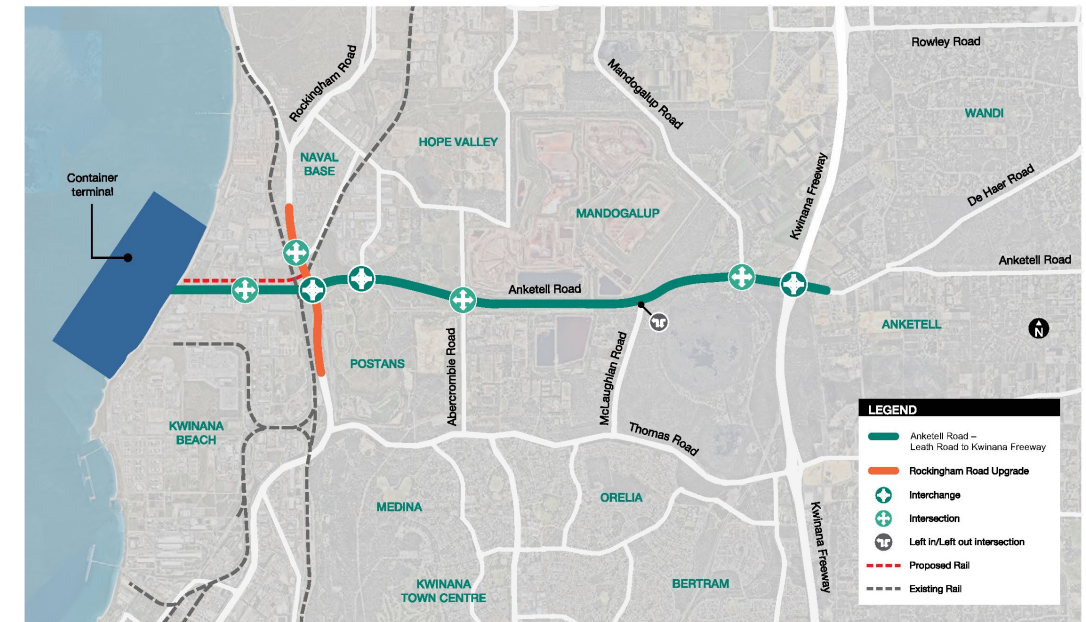
- Upgrading Anketell Rd to 4 lanes between Kwinana Fwy and Leath Rd in Kwinana
- New interchanges at Armstrong Rd, Rockingham Rd and an additional bridge over Kwinana Fwy
- Upgrading intersections at Mandogalup Rd, McLaughlan Rd, Abercrombie Rd and Leath Rd
- Upgrading Rockingham Rd near Anketell Rd

## Kwinana Fwy and Roe Hwy upgrades:

- Widening Kwinana Fwy from 4 to 6 lanes between Thomas and Russel
- Widening Roe Hwy from 4 to 6 lanes between Kwinana and Orrong
- Roe and Kwinana interchange upgrades

## North Lake Road Level Crossing Removal

### ANKETELL ROAD KWINANA FREEWAY TO LEATH ROAD



Indicative only and subject to change

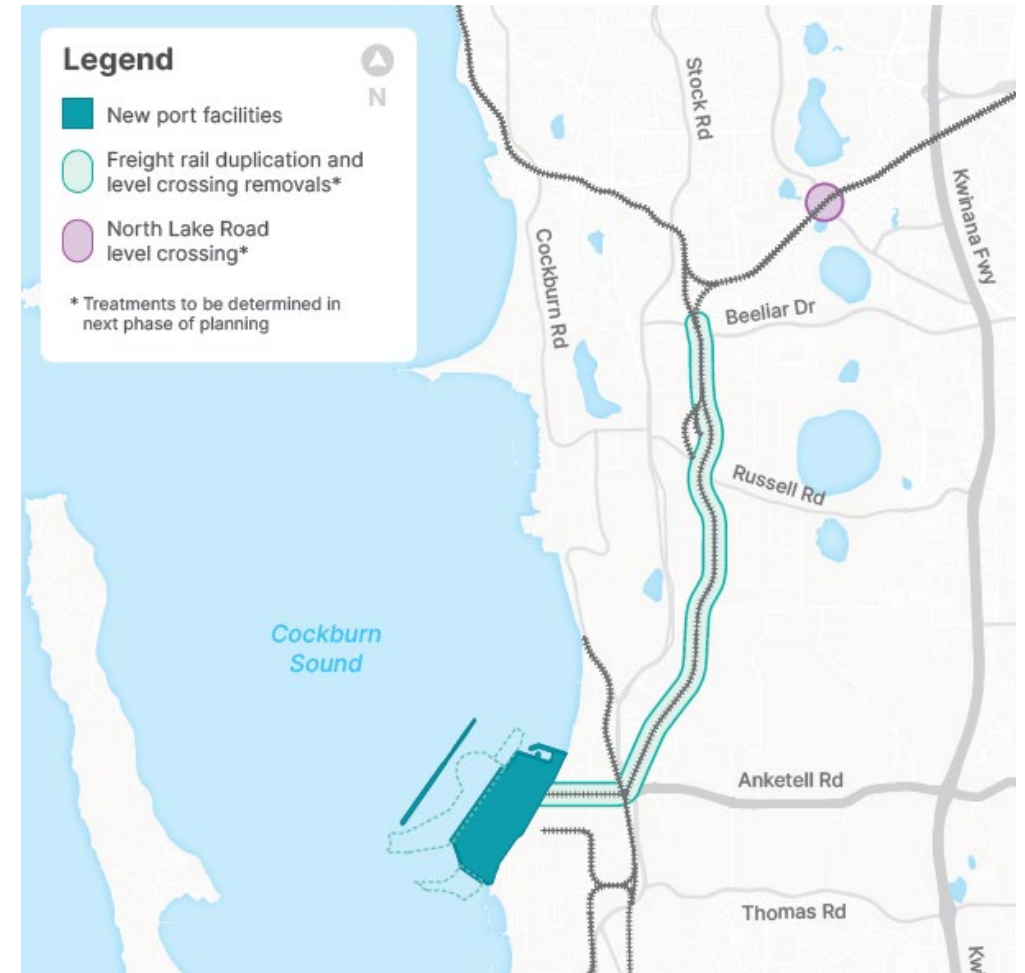
The map above depicts Anketell Rd upgrades from Kwinana Fwy to Leath Rd. Ultimately, the Anketell-Thomas Road Freight Corridor will connect the port with Tonkin Highway in Byford



# Rail infrastructure

## Rail upgrades:

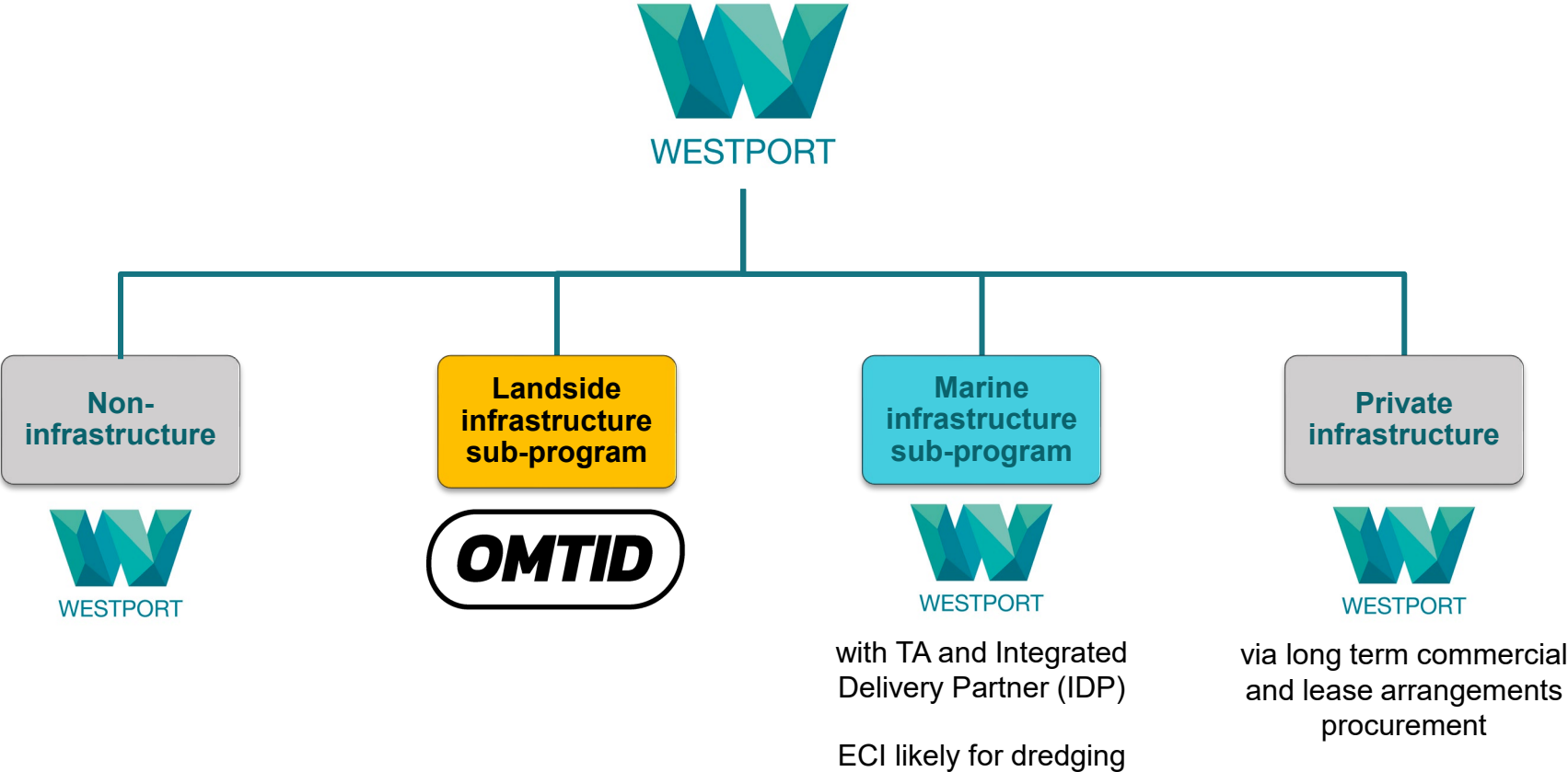
- A new freight rail spur line connecting the new port facility and on dock rail to the existing network east of Rockingham Road
- Duplicating approximately 8km of the freight rail line between Westport and the Cockburn Triangle including management of key pipeline infrastructure
- Duplicating sections of the freight rail line Forrestfield
- Potential upgrades to allow for operation of IMTs in the central-east area
- Three Level Crossing Removals including Russel Road



# Westport Stage 4 organisation

Program  
Management

Project  
Management



# Work packages

Description*	Category	Who
Kwinana Highway upgrades	Road	OMTID
Anketell Road West & Port Precinct Road	Road	OMTID
Roe Highway upgrades	Road	OMTID
Early Civils Work Package	Early works	Westport with IDP
Network upgrades (Including Westport Junction)	Rail	OMTID
North Lake Road Treatment	Rail	OMTID
Preliminary Dredging and Marine Civil Works	Marine Terminals and Infrastructure	Westport with IDP
Capital Dredging and Reclamation Work	Marine Terminals and Infrastructure	Westport with IDP
Kwinana Bulk Terminal redevelopment	Marine Terminals and Infrastructure	Westport with IDP
Port Civil Works and Port Precinct Rail Work	Marine Terminals and Infrastructure	Westport with IDP
Container Terminal Operator (reticulation, buildings & cranes)	Supply Chain Operations & Performance	Operator
On-dock Rail Terminal, ECP & Staging Facility Operators	Supply Chain Operations & Performance	Operator

*\*Indicative work packages*



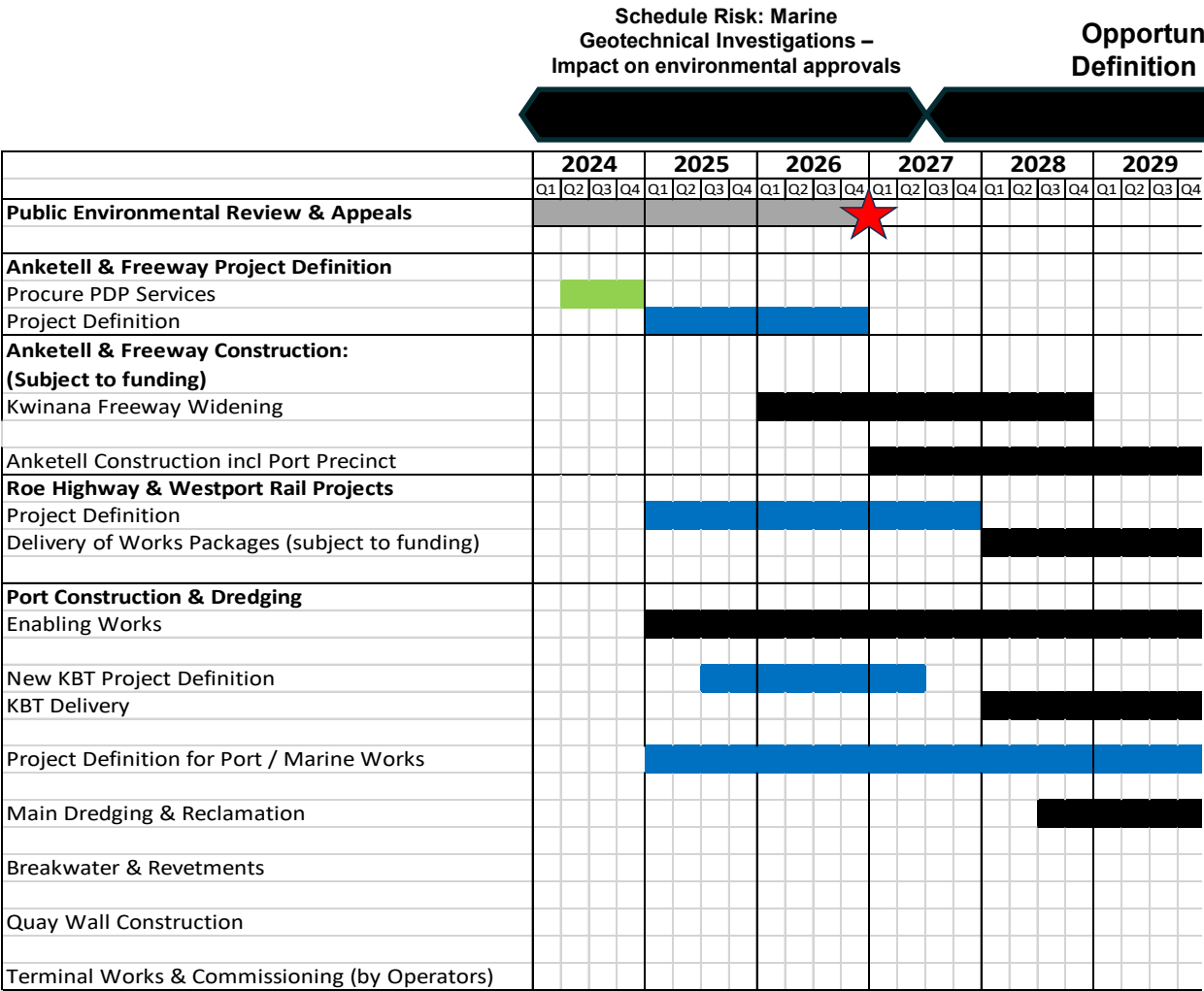


# Indicative early schedule

Procurement

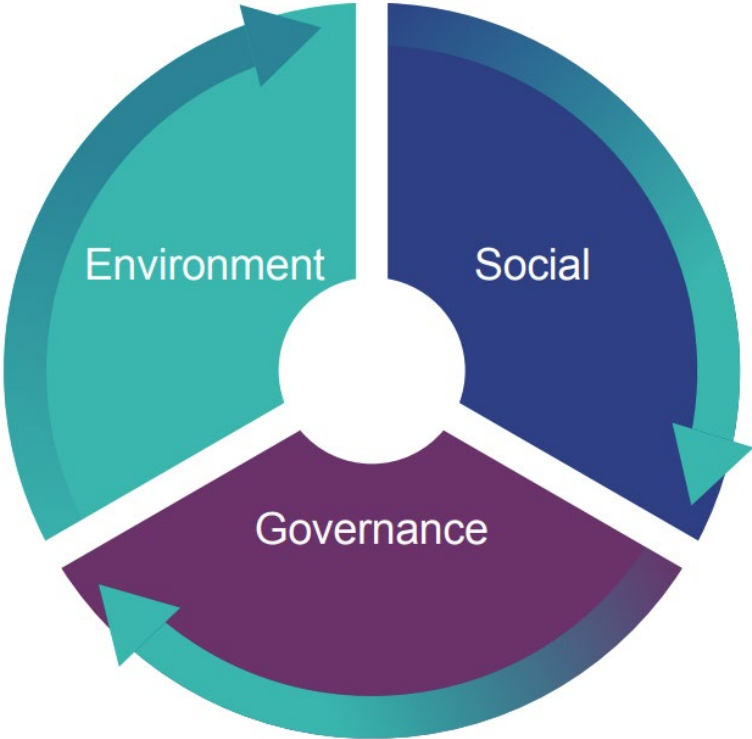
Project Definition

Delivery



Complete all Project Definition

# Catalysing change - 2030s approaches, today



# The 2024-25 Budget supports Westport to:

- Commence project definition and early marine, civil and road works
- Maintain the Westport office
- Extend some existing technical, commercial and SME contracts
- Develop clear plans for the definition and delivery stage
- Maintain the flow of information
- **Allow the Westport Program to begin engaging the market** in good faith regarding project definition for major road and marine packages of Westport (noting that final award would be after the Business Case is delivered).



# Next steps



## Procurement Approach

If Government decides to proceed, Westport will provide further briefings for consulting, construction and engineering industries. **All future tender opportunities will be advertised via [TendersWA](#).**

**We also have a procurement register of interest on our website.** Registration information will be used to develop a database of interested persons with specialist skills, who would like to be considered for future tendering opportunities with Westport.



**TendersWA**



**Procurement  
Register**



*Indicative only: Subject to Government investment*



# Q&A Session

Please submit questions via the  
MS Teams chat function





## Stay up-to-date with Westport

- ✓ **Contact us** via [enquiries@westport.wa.gov.au](mailto:enquiries@westport.wa.gov.au)
- ✓ **Subscribe** for newsletter updates: [westport.wa.gov.au/contact/subscribe/](http://westport.wa.gov.au/contact/subscribe/)
- ✓ **Follow us** on LinkedIn: [www.linkedin.com/company/westport-program](http://www.linkedin.com/company/westport-program)
- ✓ **Like us** on Facebook: <https://www.facebook.com/people/Westport-WA/61554372041906/>



**Visit our  
website**



**Subscribe to  
updates**